

BELTR



INDOOR
FLUORESCENT
PLASTIC
SURFACE-MOUNTED
BATTEN



BELTR – indoor plastic light fittings



BELTR T5
p. 94

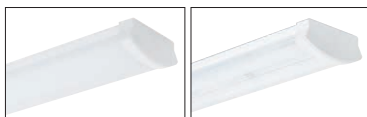


BELTR T5 OP
p. 95

BELTR T5 TR
p. 97

IP40

BELTR T8
p. 99



BELTR T8 OP
p. 100

BELTR T8 TR
p. 102

IP40

BELTR
ACCESSORIES
p. 104



BELTR
p. 104

BELTR T5



... indoor fluorescent light fitting.

USE

The light fitting is suitable for offices, hallways, school interiors, libraries, lecture rooms, sanitary rooms, hospitals and passenger terminals.

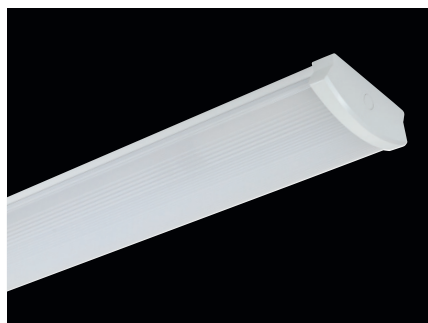
ADVANTAGES

- Light fitting protection **IP40**
- Diffuser: opalized polycarbonate (OP) or transparent polycarbonate (TR) = high mechanical resistance
- Up to 10 % lower electricity consumption when compared to electronic ballast T8
- Up to 40 % lower electricity consumption when compared to inductive ballast T8
- Up to 80 % lower electricity consumption in DALI, DIM version when compared to inductive ballast T8
- Up to 14 % higher luminous efficiency when compared to fluorescent light fittings T8
- Maximum luminous flux of the light fitting T5 is achieved at 35 °C (T8 at 25 °C)
- It can be delivered in dimmable or emergency version
- Possibility to through-wire individual light fittings to row with the use of external terminal blocks

It is also available in a **LED** design.
More information is in the TREVOS catalogue of LED light fittings marked as BELTR LED.



BELTR T5 OP



TECHNICAL DESCRIPTION

- Diffuser: opalized polycarbonate (OP), UV stable, impact-resistant
- Body (Reflector): steel sheet, white colour (RAL 9003)
- Cable gland: white, rubber
- Side covers: white, plastic (ABS)
- Terminal block: screwless, three-poles (basic version)
- Electric equipment: electronic ballast T5; T5 intelligent; T5 DALI or T5 DIM
- Light fitting protection: IP40

Code	Type	Light sources [W]	Luminous flux [lm]*	Light fitting efficiency [%]	Net weight [kg]	A [mm]	D [mm]
Diffuser made of opalized polycarbonate (OP) - electronic ballast HE (effective line) - T5/G5							
24710	BELTR 114 OP ET5	1x14	1350*	87	0.5	595	450
24720	BELTR 128 OP ET5	1x28	2900*	87	1.1	1195	900
24730	BELTR 135 OP ET5	1x35	3650*	87	1.4	1495	900
24740	BELTR 214 OP ET5	2x14	2700*	55	0.9	595	450
24750	BELTR 228 OP ET5	2x28	5800*	55	1.6	1195	900
24760	BELTR 235 OP ET5	2x35	7300*	55	1.9	1495	900
Diffuser made of opalized polycarbonate (OP) - electronic ballast HO (performance line) - T5/G5							
24715	BELTR 124 OP ET5	1x24	2000*	87	0.5	595	450
24725	BELTR 154 OP ET5	1x54	5000*	87	1.1	1195	900
24775	BELTR 149 OP ET5	1x49	4900*	87	1.4	1495	900
24735	BELTR 180 OP ET5	1x80	7000*	87	1.4	1495	900
24745	BELTR 224 OP ET5	2x24	4000*	55	0.9	595	450
24755	BELTR 254 OP ET5	2x54	10000*	55	1.6	1195	900
24785	BELTR 249 OP ET5	2x49	9800*	55	1.9	1495	900
24765	BELTR 280 OP ET5	2x80	14000*	55	2.0	1495	900

* - total luminous flux of the light fitting with T5/840 sources at the temperature of 35 °C

BELTR T5 OP

Code		Type	Diffuser made of opalized polycarbonate (OP) - electronic ballast T5					
			1F	3F	M1h	M3h	3F M1h	3F M3h
24710	BELTR 114 OP ET5		x	x	x	x	x	x
24720	BELTR 128 OP ET5		x	x	24728	x	x	x
24730	BELTR 135 OP ET5		x	x	24738	x	x	x
24740	BELTR 214 OP ET5		x	x	x	x	x	x
24750	BELTR 228 OP ET5		24752	24782	24758	x	24788	x
24760	BELTR 235 OP ET5		24762	24792	24768	x	24798	x
24715	BELTR 124 OP ET5		x	x	x	x	x	x
24725	BELTR 154 OP ET5		x	x	x	x	x	x
24775	BELTR 149 OP ET5		x	x	x	x	x	x
24735	BELTR 180 OP ET5		x	x	x	x	x	x
24745	BELTR 224 OP ET5		x	x	x	x	x	x
24755	BELTR 254 OP ET5		24756	24786	24754	x	24784	x
24785	BELTR 249 OP ET5		24776	24706	24774	x	24794	x
24765	BELTR 280 OP ET5		24766	24796	x	x	x	x

BELTR T5 OP DIM

Code		Type	Diffuser made of opalized polycarbonate (OP), electronic analogue dimmable ballast T5 DIM 1-10 V					
			1F	3F	M1h	M3h	3F M1h	3F M3h
24727	BELTR 128 OP ERT5 DIM		x	x	24827	x	x	x
24737	BELTR 135 OP ERT5 DIM		x	x	24837	x	x	x
24757	BELTR 228 OP ERT5 DIM		24707	24787	24857	x	24807	x
24767	BELTR 235 OP ERT5 DIM		24717	24797	24867	x	24817	x
24723	BELTR 154 OP ERT5 DIM		x	x	x	x	x	x
24743	BELTR 149 OP ERT5 DIM		x	x	x	x	x	x
24733	BELTR 180 OP ERT5 DIM		x	x	x	x	x	x
24753	BELTR 254 OP ERT5 DIM		24853	24783	24804	x	24824	x
24773	BELTR 249 OP ERT5 DIM		24873	24793	24814	x	24834	x
24763	BELTR 280 OP ERT5 DIM		24863	24813	x	x	x	x

Example of type marking: 24793 = BELTR 249 OP **3F** ERT5 DIM

BELTR T5 OP DALI

Diffuser made of opalized polycarbonate (OP) - electronic digital dimmable ballast T5 DALI

Code	Type	1F	3F	M1h	M3h	3F M1h	3F M3h
24825	BELTR 128 OP ERT5 DALI	x	x	24828	x	x	x
24835	BELTR 135 OP ERT5 DALI	x	x	24838	x	x	x
24855	BELTR 228 OP ERT5 DALI	24805	24885	24858	x	24808	x
24865	BELTR 235 OP ERT5 DALI	24815	24895	24868	x	24818	x
24721	BELTR 154 OP ERT5 DALI	x	x	x	x	x	x
24741	BELTR 149 OP ERT5 DALI	x	x	x	x	x	x
24731	BELTR 180 OP ERT5 DALI	x	x	x	x	x	x
24751	BELTR 254 OP ERT5 DALI	24781	24881	24844	x	24864	x
24771	BELTR 249 OP ERT5 DALI	24701	24801	24854	x	24874	x
24761	BELTR 280 OP ERT5 DALI	24791	24891	x	x	x	x

BELTR T5 OP S3F

Diffuser made of opalized polycarbonate (OP), through-wiring with the use of external terminal blocks Wieland (S) GST15i5

Code	Type	M1h	ERT5 DIM	ERT5 DIM M1h	ERT5 DALI	ERT5 DALI M1h
24842	BELTR 214 OP S3F ET5	x	x	x	x	x
24852	BELTR 228 OP S3F ET5	24888	24887	x	24821	x
24862	BELTR 235 OP S3F ET5	24898	24897	x	24831	x
24846	BELTR 224 OP S3F ET5	x	x	x	x	x
24856	BELTR 254 OP S3F ET5	24884	24883	x	24841	x
24886	BELTR 249 OP S3F ET5	24894	24893	x	24851	x
24866	BELTR 280 OP S3F ET5	x	24803	x	24861	x

Example of type marking: 24893 = BELTR 249 OP S3F **ERT5 DIM**

MADE-TO-ORDER VERSION

* we can also deliver made-to-order light fittings equipped with back-up source for emergency (non-maintained) illumination

BELTR T5 OP NM1h

Diffuser made of opalized polycarbonate (OP), emergency back-up source - 1 hour for emergency (non-maintained) illumination

BELTR T5 OP NM3h

Diffuser made of opalized polycarbonate (OP), emergency back-up source - 3 hours for emergency (non-maintained) illumination, plastic clips

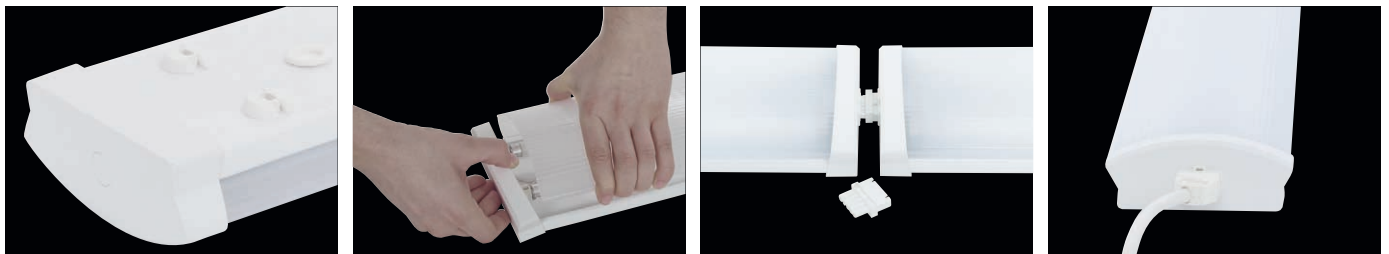
LEGEND

- ERT5 DALI** – version with electronic digital dimmable ballast controlled by DALI protocol
- ERT5 DIM** – version with electronic analogue dimmable ballast 1–10 V
- 1F** – 1 phase wiring cables for through-wiring
- 3F** – 3 phase wiring cables for through-wiring
- S3F** – external terminal block Wieland, 3 phase wiring cables for through-wiring

- M1h** – emergency back-up source with operating time of 1 hour (SA) for both permanent and emergency illumination
 - M3h** – emergency back-up source with operating time of 3 hours (SA) for both permanent and emergency illumination
 - NM1h** – emergency back-up source with operating time of 1 hour (SE) for emergency (non-maintained) illumination
 - NM3h** – emergency back-up source with operating time of 3 hours (SE) for emergency (non-maintained) illumination
- Batteries must be formatted before their putting into operation. Assembly instructions must be observed at installation.

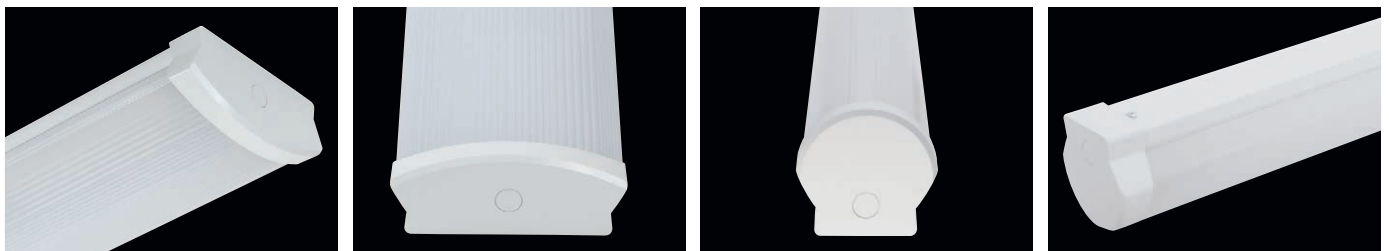
LIGHT FITTING ATTACHMENT

Directly to a ceiling or a wall with the use of screws



LIGHT FITTING DETAILED VIEW

BELTR T5 OP



BELTR T5 TR



TECHNICAL DESCRIPTION

- Diffuser: transparent polycarbonate (TR), UV stable, impact-resistant
- Body (Reflector): steel sheet, white colour (RAL 9003)
- Cable glands: rubber (SBS)
- Side covers: white, plastic (ABS)
- Terminal block: screwless, three-poles (basic version)
- Electric equipment: electronic ballast T5; T5 intelligent; T5 DALI or T5 DIM
- Light fitting protection: IP40

Code	Type	Light sources [W]	Luminous flux [lm]*	Light fitting efficiency [%]	Net weight [kg]	A [mm]	D [mm]
Diffuser made of transparent polycarbonate (TR) - electronic ballast HE (effective line) - T5/G5							
24510	BELTR 114 TR ET5	1x14	1350*	93	0.5	595	450
24520	BELTR 128 TR ET5	1x28	2900*	93	1.1	1195	900
24530	BELTR 135 TR ET5	1x35	3650*	93	1.4	1495	900
24540	BELTR 214 TR ET5	2x14	2700*	59	0.9	595	450
24550	BELTR 228 TR ET5	2x28	5800*	59	1.6	1195	900
24560	BELTR 235 TR ET5	2x35	7300*	59	1.9	1495	900
Diffuser made of transparent polycarbonate (TR) - electronic ballast HO (performance line) - T5/G5							
24515	BELTR 124 TR ET5	1x24	2000*	93	0.5	595	450
24525	BELTR 154 TR ET5	1x54	5000*	93	1.1	1195	900
24575	BELTR 149 TR ET5	1x49	4900*	93	1.4	1495	900
24535	BELTR 180 TR ET5	1x80	7000*	93	1.4	1495	900
24545	BELTR 224 TR ET5	2x24	4000*	59	0.9	595	450
24555	BELTR 254 TR ET5	2x54	10000*	59	1.6	1195	900
24585	BELTR 249 TR ET5	2x49	9800*	59	1.9	1495	900
24565	BELTR 280 TR ET5	2x80	14000*	59	2.0	1495	900

* - total luminous flux of the light fitting with T5/840 sources at the temperature of 35 °C

BELTR T5 TR

Code		Type	Diffuser made of transparent polycarbonate (TR) - electronic ballast T5					
			1F	3F	M1h	M3h	3F M1h	3F M3h
24510	BELTR 114 TR ET5		x	x	x	x	x	x
24520	BELTR 128 TR ET5		x	x	24528	x	x	x
24530	BELTR 135 TR ET5		x	x	24538	x	x	x
24540	BELTR 214 TR ET5		x	x	x	x	x	x
24550	BELTR 228 TR ET5		24552	24582	24558	x	24588	x
24560	BELTR 235 TR ET5		24562	24592	24568	x	24598	x
24515	BELTR 124 TR ET5		x	x	x	x	x	x
24525	BELTR 154 TR ET5		x	x	x	x	x	x
24575	BELTR 149 TR ET5		x	x	x	x	x	x
24535	BELTR 180 TR ET5		x	x	x	x	x	x
24545	BELTR 224 TR ET5		x	x	x	x	x	x
24555	BELTR 254 TR ET5		24556	24586	24554	x	24584	x
24585	BELTR 249 TR ET5		24576	24506	24574	x	24594	x
24565	BELTR 280 TR ET5		24566	24596	x	x	x	x

BELTR T5 TR DIM

Code		Type	Diffuser made of transparent polycarbonate (TR), electronic analogue dimmable ballast T5 DIM 1-10 V					
			1F	3F	M1h	M3h	3F M1h	3F M3h
24527	BELTR 128 TR ERT5 DIM		x	x	24627	x	x	x
24537	BELTR 135 TR ERT5 DIM		x	x	24637	x	x	x
24557	BELTR 228 TR ERT5 DIM		24507	24587	24657	x	24607	x
24567	BELTR 235 TR ERT5 DIM		24517	24597	24667	x	24617	x
24523	BELTR 154 TR ERT5 DIM		x	x	x	x	x	x
24543	BELTR 149 TR ERT5 DIM		x	x	x	x	x	x
24533	BELTR 180 TR ERT5 DIM		x	x	x	x	x	x
24553	BELTR 254 TR ERT5 DIM		24653	24583	24604	x	24624	x
24573	BELTR 249 TR ERT5 DIM		24673	24593	24614	x	24634	x
24563	BELTR 280 TR ERT5 DIM		24663	24613	x	x	x	x

Example of type marking: 24593 = BELTR 249 TR 3F ERT5 DIM

BELTR T5 TR DALI

Diffuser made of transparent polycarbonate (TR) - electronic digital dimmable ballast T5 DALI

Code	Type	1F	3F	M1h	M3h	3F M1h	3F M3h
24625	BELTR 128 TR ERT5 DALI	x	x	24628	x	x	x
24635	BELTR 135 TR ERT5 DALI	x	x	24638	x	x	x
24655	BELTR 228 TR ERT5 DALI	24605	24685	24658	x	24608	x
24665	BELTR 235 TR ERT5 DALI	24615	24695	24668	x	24618	x
24521	BELTR 154 TR ERT5 DALI	x	x	x	x	x	x
24541	BELTR 149 TR ERT5 DALI	x	x	x	x	x	x
24531	BELTR 180 TR ERT5 DALI	x	x	x	x	x	x
24551	BELTR 254 TR ERT5 DALI	24581	24681	24644	x	24664	x
24571	BELTR 249 TR ERT5 DALI	24501	24601	24654	x	24674	x
24561	BELTR 280 TR ERT5 DALI	24591	24691	x	x	x	x

BELTR T5 TR S3F

Diffuser made of transparent polycarbonate (TR), through-wiring with the use of external terminal blocks Wieland (S) GST15i5

Code	Type	M1h	ERT5 DIM	ERT5 DIM M1h	ERT5 DALI	ERT5 DALI M1h
24642	BELTR 214 TR S3F ET5	x	x	x	x	x
24652	BELTR 228 TR S3F ET5	24688	24687	x	24621	x
24662	BELTR 235 TR S3F ET5	24698	24697	x	24631	x
24646	BELTR 224 TR S3F ET5	x	x	x	x	x
24656	BELTR 254 TR S3F ET5	24684	24683	x	24641	x
24686	BELTR 249 TR S3F ET5	24694	24693	x	24651	x
24666	BELTR 280 TR S3F ET5	x	24603	x	24661	x

Example of type marking: 24693 = BELTR 249 TR S3F **ERT5 DIM**

MADE-TO-ORDER VERSION

* we can also deliver made-to-order light fittings equipped with back-up source for emergency (non-maintained) illumination

BELTR T5 TR NM1h

Diffuser made of transparent polycarbonate (TR), emergency back-up source - 1 hour for emergency (non-maintained) illumination

BELTR T5 TR NM3h

Diffuser made of transparent polycarbonate (TR), emergency back-up source - 3 hours for emergency (non-maintained) illumination, plastic clips

LEGEND

- ERT5 DALI** – version with electronic digital dimmable ballast controlled by DALI protocol
- ERT5 DIM** – version with electronic analogue dimmable ballast 1–10 V
- 1F** – 1 phase wiring cables for through-wiring
- 3F** – 3 phase wiring cables for through-wiring
- S3F** – external terminal block Wieland, 3 phase wiring cables for through-wiring

- M1h** – emergency back-up source with operating time of 1 hour (SA) for both permanent and emergency illumination
 - M3h** – emergency back-up source with operating time of 3 hours (SA) for both permanent and emergency illumination
 - NM1h** – emergency back-up source with operating time of 1 hour (SE) for emergency (non-maintained) illumination
 - NM3h** – emergency back-up source with operating time of 3 hours (SE) for emergency (non-maintained) illumination
- Batteries must be formatted before their putting into operation. Assembly instructions must be observed at installation.

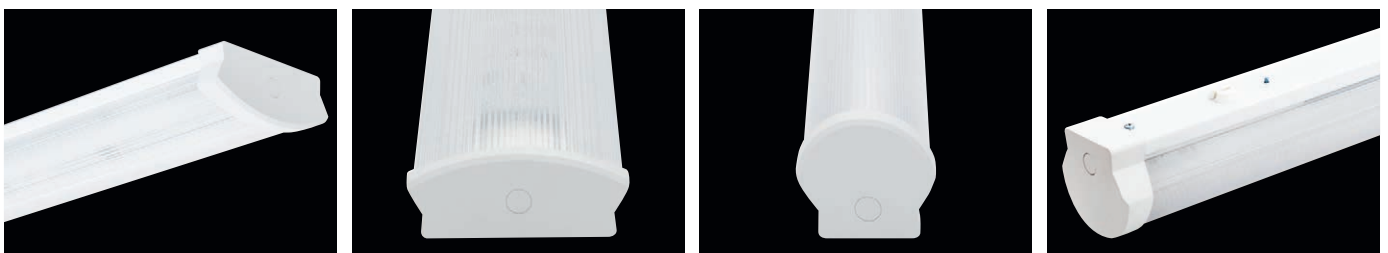
LIGHT FITTING ATTACHMENT

Directly to a ceiling or a wall with the use of screws



LIGHT FITTING DETAILED VIEW

BELTR T5 TR



BELTR T8



... indoor fluorescent light fitting.

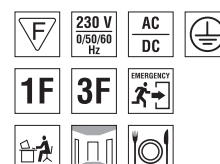
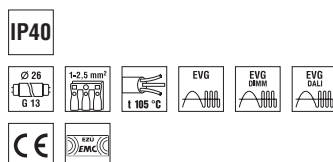
USE

The light fitting is suitable for offices, hallways, school interiors, libraries, lecture rooms, sanitary rooms, hospitals and passenger terminals.

ADVANTAGES

- Light fitting protection **IP40**
- Diffuser: opalized polycarbonate (OP) or transparent polycarbonate (TR) = high mechanical resistance
- Up to 30 % lower electricity consumption in DALI, DIM version
- It can be delivered in dimmable or emergency version
- Possibility to through-wire individual light fittings to row with the use of external terminal blocks

It is also available in a **LED** design.
More information is in the TREVOS catalogue of LED light fittings marked as BELTR LED.



BELTR T8 OP



TECHNICAL DESCRIPTION

- Diffuser: opalized polycarbonate (OP), UV stable, impact-resistant
- Body (Reflector): steel sheet, white colour (RAL 9003)
- Cable gland: white, rubber
- Side covers: white, plastic (ABS)
- Terminal block: screwless, three-poles (basic version)
- Electric equipment: electronic ballast T8; T8 DALI or T8 DIM
- Light fitting protection: IP40

Code	Type	Light sources [W]	Luminous flux [lm]*	Light fitting efficiency [%]	Net weight [kg]	A [mm]	D [mm]
Diffuser made of opalized polycarbonate (OP) - electronic ballast - T8/G13							
24215	BELTR 118 OP E	1x18	1350*	75	0.6	635	450
24225	BELTR 136 OP E	1x36	3350*	75	1.1	1245	900
24235	BELTR 158 OP E	1x58	5200*	75	1.3	1545	900
24245	BELTR 218 OP E	2x18	2700*	57	1.2	635	450
24255	BELTR 236 OP E	2x36	6700*	57	1.6	1245	900
24265	BELTR 258 OP E	2x58	10400*	57	1.9	1545	900

* - total luminous flux of the light fitting with T8/840 sources at the temperature of 25 °C

BELTR T8 OP E

Diffuser made of opalized polycarbonate (OP) - electronic ballast T8

Code	Type	1F	3F	M1h	M3h	3F M1h	3F M3h
24215	BELTR 118 OP E	x	x	x	x	x	x
24225	BELTR 136 OP E	x	x	24224	x	x	x
24235	BELTR 158 OP E	x	x	24234	x	x	x
24245	BELTR 218 OP E	x	x	x	x	x	x
24255	BELTR 236 OP E	24256	24286	24254	x	24284	x
24265	BELTR 258 OP E	24266	24296	24264	x	24294	x

BELTR T8 OP DIM

Diffuser made of opalized polycarbonate (OP), electronic analogue dimmable ballast T8 DIM 1-10 V

Code	Type	1F	3F	M1h	M3h	3F M1h	3F M3h
24227	BELTR 136 OP ER DIM	x	x	24327	x	x	x
24237	BELTR 158 OP ER DIM	x	x	24337	x	x	x
24257	BELTR 236 OP ER DIM	24247	24287	24347	x	24367	x
24267	BELTR 258 OP ER DIM	24277	24297	24357	x	24377	x

BELTR T8 OP DALI

Diffuser made of opalized polycarbonate (OP) - electronic digital dimmable ballast T8 DALI

Code	Type	1F	3F	M1h	M3h	3F M1h	3F M3h
24228	BELTR 136 OP ER DALI	x	x	24328	x	x	x
24238	BELTR 158 OP ER DALI	x	x	24338	x	x	x
24258	BELTR 236 OP ER DALI	24248	24288	24348	x	24368	x
24268	BELTR 258 OP ER DALI	24278	24298	24358	x	24378	x

BELTR T8 OP S3F

Diffuser made of opalized polycarbonate (OP), through-wiring with the use of external terminal blocks Wieland (S) GST15i5

Code	Type	M1h	ER DIM	ER DIM M1h	ER DALI	ER DALI M1h
24346	BELTR 218 OP S3F E	x	x	x	x	x
24356	BELTR 236 OP S3F E	24384	24387	x	24388	x
24366	BELTR 258 OP S3F E	24394	24397	x	24398	x

Example of type marking: 24397 = BELTR 258 OP S3F ER DIM

MADE-TO-ORDER VERSION

* we can also deliver made-to-order light fittings equipped with back-up source for emergency (non-maintained) illumination

BELTR T8 OP NM1h

Diffuser made of opalized polycarbonate (OP),
emergency back-up source - 1 hour for emergency (non-maintained) illumination

BELTR T8 OP NM3h

Diffuser made of opalized polycarbonate (OP),
emergency back-up source - 3 hours for emergency (non-maintained) illumination, plastic clips

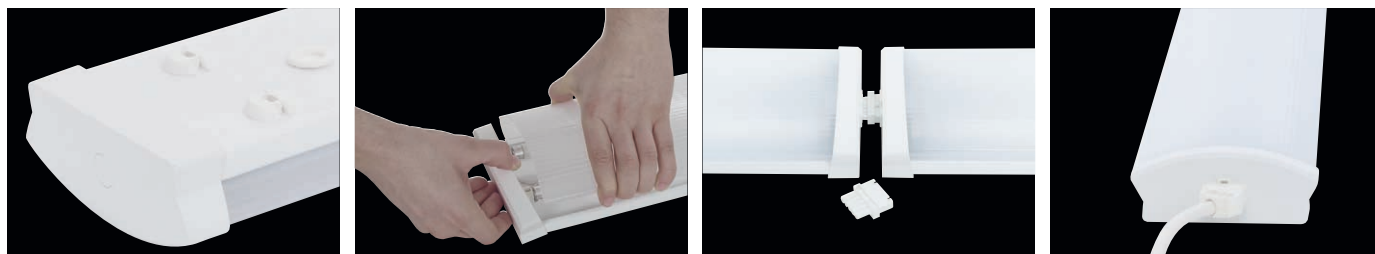
LEGEND

- E** – electronic ballast
- ER DALI** – version with electronic digital dimmable ballast controlled by DALI protocol
- ER DIM** – version with electronic analogue dimmable ballast 1-10 V
- 1F** – 1 phase wiring cables for through-wiring
- 3F** – 3 phase wiring cables for through-wiring
- S3F** – external terminal block Wieland, 3 phase wiring cables for through-wiring

- M1h** – emergency back-up source with operating time of 1 hour (SA) for both permanent and emergency illumination
 - M3h** – emergency back-up source with operating time of 3 hours (SA) for both permanent and emergency illumination
 - NM1h** – emergency back-up source with operating time of 1 hour (SE) for emergency (non-maintained) illumination
 - NM3h** – emergency back-up source with operating time of 3 hours (SE) for emergency (non-maintained) illumination
- Batteries must be formatted before their putting into operation. Assembly instructions must be observed at installation.

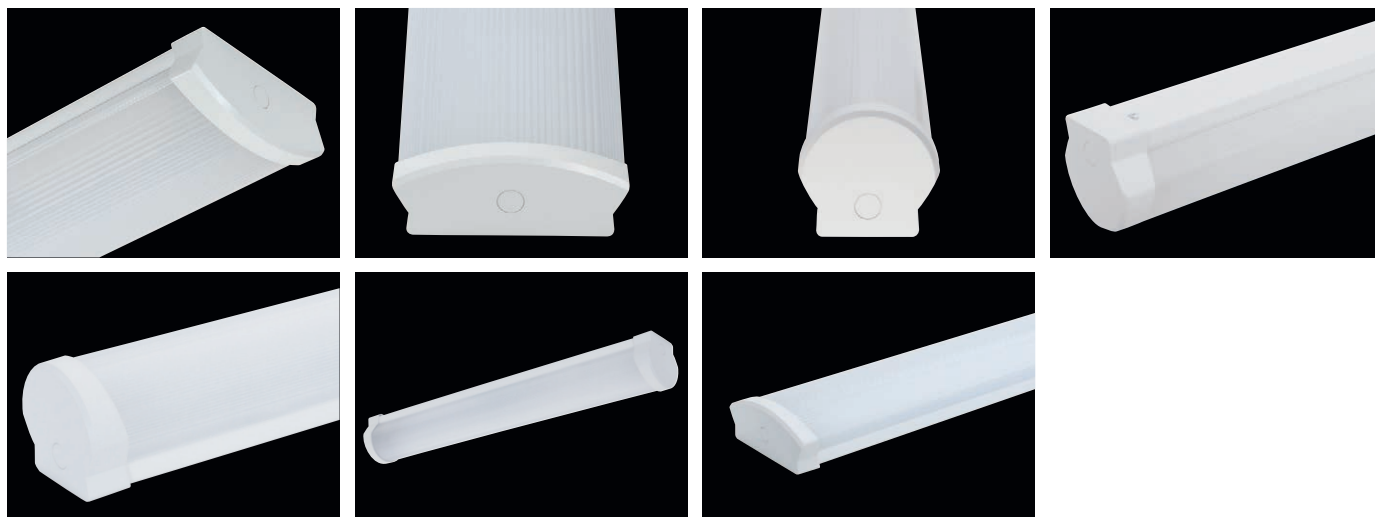
LIGHT FITTING ATTACHMENT

Directly to a ceiling or a wall with the use of screws



LIGHT FITTING DETAILED VIEW

BELTR T8 OP



BELTR T8 TR



TECHNICAL DESCRIPTION

- Diffuser: transparent polycarbonate (TR), UV stable, impact-resistant
- Body (Reflector): steel sheet, white colour (RAL 9003)
- Cable gland: white, rubber
- Side covers: white, plastic (ABS)
- Terminal block: screwless, three-poles (basic version)
- Electric equipment: electronic ballast T8; T8 DALI or T8 DIM
- Light fitting protection: IP40

Code	Type	Light sources [W]	Luminous flux [lm]*	Light fitting efficiency [%]	Net weight [kg]	A [mm]	D [mm]
Diffuser made of transparent polycarbonate (TR) - electronic ballast - T8/G13							
24015	BELTR 118 TR E	1x18	1350*	82	0.6	635	450
24025	BELTR 136 TR E	1x36	3350*	82	1.1	1245	900
24035	BELTR 158 TR E	1x58	5200*	82	1.3	1545	900
24045	BELTR 218 TR E	2x18	2700*	63	1.2	635	450
24055	BELTR 236 TR E	2x36	6700*	63	1.6	1245	900
24065	BELTR 258 TR E	2x58	10400*	63	1.9	1545	900

* - total luminous flux of the light fitting with T8/840 sources at the temperature of 25 °C

BELTR T8 TR E

Diffuser made of transparent polycarbonate (TR), electronic ballast T8

Code	Type	1F	3F	M1h	M3h	3F M1h	3F M3h
24015	BELTR 118 TR E	x	x	x	x	x	x
24025	BELTR 136 TR E	x	x	24024	x	x	x
24035	BELTR 158 TR E	x	x	24034	x	x	x
24045	BELTR 218 TR E	x	x	x	x	x	x
24055	BELTR 236 TR E	24056	24086	24054	x	24084	x
24065	BELTR 258 TR E	24066	24096	24064	x	24094	x

BELTR T8 TR DIM

Diffuser made of transparent polycarbonate (TR), electronic analogue dimmable ballast T8 DIM 1-10 V

Code	Type	1F	3F	M1h	M3h	3F M1h	3F M3h
24027	BELTR 136 TR ER DIM	x	x	24127	x	x	x
24037	BELTR 158 TR ER DIM	x	x	24137	x	x	x
24057	BELTR 236 TR ER DIM	24047	24087	24147	x	24167	x
24067	BELTR 258 TR ER DIM	24077	24097	24157	x	24177	x

BELTR T8 TR DALI

Diffuser made of transparent polycarbonate (TR), electronic digital dimmable ballast T8 DALI

Code	Type	1F	3F	M1h	M3h	3F M1h	3F M3h
24028	BELTR 136 TR ER DALI	x	x	24128	x	x	x
24038	BELTR 158 TR ER DALI	x	x	24138	x	x	x
24058	BELTR 236 TR ER DALI	24048	24088	24148	x	24168	x
24068	BELTR 258 TR ER DALI	24078	24098	24158	x	24178	x

BELTR T8 TR S3F

Diffuser made of transparent polycarbonate (TR), through-wiring with the use of external terminal blocks Wieland (S) GST15i5

Code	Type	M1h	ER DIM	ER DIM M1h	ER DALI	ER DALI M1h
24146	BELTR 218 TR S3F E	x	x	x	x	x
24156	BELTR 236 TR S3F E	24184	24187	x	24188	x
24166	BELTR 258 TR S3F E	24194	24197	x	24198	x

Example of type marking: 24197 = BELTR 258 TR S3F ER DIM

MADE-TO-ORDER VERSION

* we can also deliver made-to-order light fittings equipped with back-up source for emergency (non-maintained) illumination

BELTR T8 TR NM1h

Diffuser made of transparent polycarbonate (TR),
emergency back-up source - 1 hour for emergency (non-maintained) illumination

BELTR T8 TR NM3h

Diffuser made of transparent polycarbonate (TR),
emergency back-up source - 3 hours for emergency (non-maintained) illumination, plastic clips

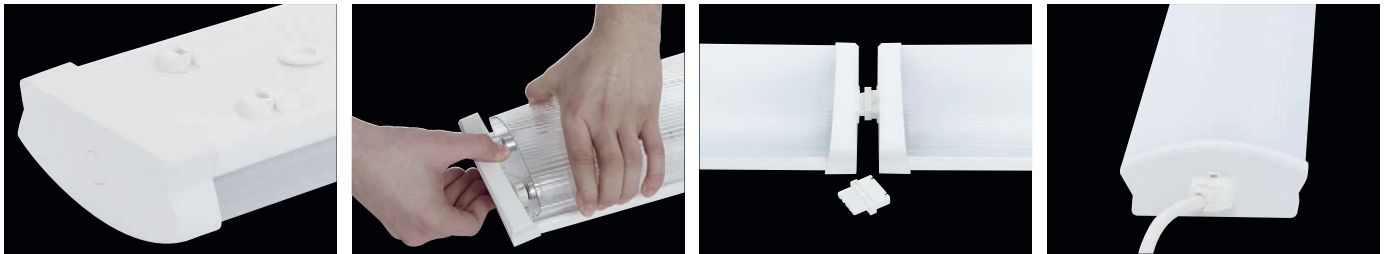
LEGEND

- E** – electronic ballast
- ER DALI** – version with electronic digital dimmable ballast controlled by DALI protocol
- ER DIM** – version with electronic analogue dimmable ballast 1-10 V
- 1F** – 1 phase wiring cables for through-wiring
- 3F** – 3 phase wiring cables for through-wiring
- S3F** – external terminal block Wieland, 3 phase wiring cables for through-wiring

- M1h** – emergency back-up source with operating time of 1 hour (SA) for both permanent and emergency illumination
 - M3h** – emergency back-up source with operating time of 3 hours (SA) for both permanent and emergency illumination
 - NM1h** – emergency back-up source with operating time of 1 hour (SE) for emergency (non-maintained) illumination
 - NM3h** – emergency back-up source with operating time of 3 hours (SE) for emergency (non-maintained) illumination
- Batteries must be formatted before their putting into operation. Assembly instructions must be observed at installation.

LIGHT FITTING ATTACHMENT

Directly to a ceiling or a wall with the use of screws



LIGHT FITTING DETAILED VIEW

BELTR T8 TR



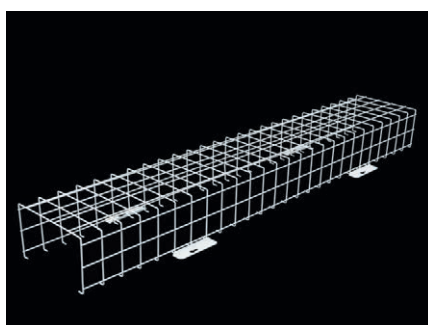
Securing of side covers

As a special design a version with securing of side covers with screws against unauthorised access to the lamps (for double tube versions) can be ordered.



OM – protective grid

The metal grid protects the light fitting against mechanical damage and unauthorised handling. It is attached to the surface with the use of screws. The surface is treated with the RAL 9003 powder-coated colour.



Code	Type	Description	Weight [kg]
11941	OM 218	protective grid for types 218, 214/224, 2.2ft (700×220×130 mm)	1.0
11942	OM 236	protective grid for types 236, 228/254, 2.4ft (1300×220×130 mm)	1.7
11943	OM 258	protective grid for types 258, 235/249/280, 2.5ft (1600×220×130 mm)	2.0

Connection cables and connectors:



Code	Type	Description	Weight [kg]
27401	GST 15i5-S1	5-pole wiring terminal block	0.1



Code	Type	Description	Weight [kg]
27421	GST 15i5-S21	interconnecting cable 5x1.5 mm ² - female/male L=1m	0.2
27422	GST 15i5-S22	interconnecting cable 5x1.5 mm ² - female/male L=2m	0.3
27423	GST 15i5-S23	interconnecting cable 5x1.5 mm ² - female/male L=3m	0.4
27424	GST 15i5-S24	interconnecting cable 5x1.5 mm ² - female/male L=4m	0.5
27425	GST 15i5-S25	interconnecting cable 5x1.5 mm ² - female/male L=5m	0.6
27426	GST 15i5-S26	interconnecting cable 5x1.5 mm ² - female/male L=6m	0.7
27427	GST 15i5-S27	interconnecting cable 5x1.5 mm ² - female/male L=7m	0.8
27428	GST 15i5-S28	interconnecting cable 5x1.5 mm ² - female/male L=8m	0.9



Code	Type	Description	Weight [kg]
27431	GST 15i5-S31	connecting cable 5x1.5 mm ² - male/free end L=1m	0.2
27432	GST 15i5-S32	connecting cable 5x1.5 mm ² - male/free end L=2m	0.3
27433	GST 15i5-S33	connecting cable 5x1.5 mm ² - male/free end L=3m	0.4
27434	GST 15i5-S34	connecting cable 5x1.5 mm ² - male/free end L=4m	0.5
27435	GST 15i5-S35	connecting cable 5x1.5 mm ² - male/free end L=5m	0.6
27436	GST 15i5-S36	connecting cable 5x1.5 mm ² - male/free end L=6m	0.7
27437	GST 15i5-S37	connecting cable 5x1.5 mm ² - male/free end L=7m	0.8
27438	GST 15i5-S38	connecting cable 5x1.5 mm ² - male/free end L=8m	0.9



Code	Type	Description	Weight [kg]
27441	GST 15i5-S41	connecting cable 5x1.5 mm ² - female/free end L=1m	0.2
27442	GST 15i5-S42	connecting cable 5x1.5 mm ² - female/free end L=2m	0.3
27443	GST 15i5-S43	connecting cable 5x1.5 mm ² - female/free end L=3m	0.4
27444	GST 15i5-S44	connecting cable 5x1.5 mm ² - female/free end L=4m	0.5
27445	GST 15i5-S45	connecting cable 5x1.5 mm ² - female/free end L=5m	0.6
27446	GST 15i5-S46	connecting cable 5x1.5 mm ² - female/free end L=6m	0.7
27447	GST 15i5-S47	connecting cable 5x1.5 mm ² - female/free end L=7m	0.8
27448	GST 15i5-S48	connecting cable 5x1.5 mm ² - female/free end L=8m	0.9



SB



INDOOR
FLUORESCENT
LINEAR
WITH SWITCH



SB – indoor plastic light fittings



SB T8
p. 108



IP20

SB T8
p. 108

SB T8



... indoor fluorescent light fitting.

USE

The light fitting is suitable for sanitary facilities, kitchen units, wall units, cloakrooms, work surfaces and shop windows.

ADVANTAGES

- Light fitting protection: **IP20**
- Diffuser: transparent acrylate = excellent optical characteristics
- Integrated switch in side plastic cover
- It is supplied including fluorescent tube T8
- It can be delivered in dimmable version
- Package: sleeve printed in colour, protection against scratches

IP20

Ø 26
G 13

±2.5 mm²
6-20

1 105 °C

EVG

EVG
0Min

EVG
0Min

F

230 V
0/50/60
Hz

AC
DC

⊕

CE

⊕

⊕

⊕

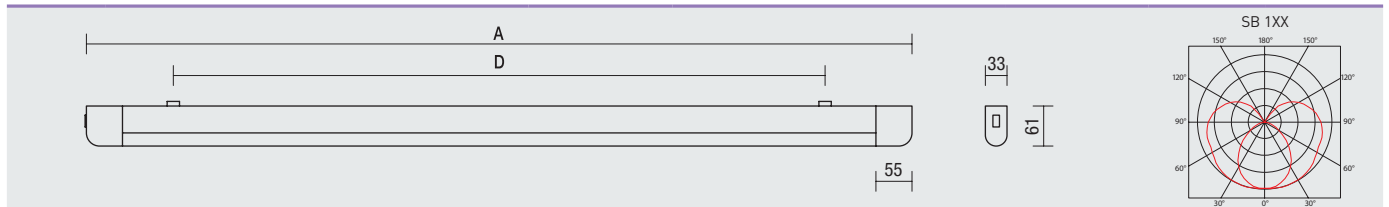
⊕

SB T8



TECHNICAL DESCRIPTION

- Diffuser: transparent acrylate, UV stable, excellent optical characteristics
- Body: steel sheet, white colour (RAL 9003)
- Cable gland: white, rubber
- Terminal block: screwed, three-poles
- Side cover: white, plastic (ABS)
- Electric equipment: electronic ballast T8; T8 DALI or T8 DIM
- Switch: built-in at side cover
- Light fitting protection: IP20



Code	Type	Light sources [W]	Luminous flux [lm]*	Light fitting efficiency [%]	Net weight [kg]	A [mm]	D [mm]
Diffuser made of transparent acrylate - electronic ballast - T8/G13							
12215	SB 110 E	1x10	650*	67	0.5	410	215
12225	SB 115 E	1x15	950*	67	0.6	520	260
12235	SB 118 E	1x18	1350*	67	0.7	670	405
12245	SB 130 E	1x30	2400*	67	1.1	975	710
12255	SB 136 E	1x36	3350*	67	1.4	1280	1015
12265	SB 158 E	1x58	5200*	67	1.6	1580	1310

* - total luminous flux of the light fitting with T8/840 sources at the temperature of 25 °C

SB T8

Diffuser made of transparent acrylate, electronic ballast T8

Code	Type	ER DIM	ER DALI
12215	SB 110 E	x	x
12225	SB 115 E	x	x
12235	SB 118 E	x	x
12245	SB 130 E	12247	12417
12255	SB 136 E	12257	12427
12265	SB 158 E	12267	12437

Example of type marking: 12437 = SB 158 **ER DALI**

LEGEND

ER DALI – version with electronic digital dimmable ballast controlled by DALI protocol

ER DIM – version with electronic analogue dimmable ballast 1-10 V

E – electronic ballast

LIGHT FITTING ATTACHMENT AND ITS DETAILED VIEW

Directly to a ceiling or a wall with the use of screws

